



THE REAL PRIVATE TEACHERS' VOICE EXAMINATIONS BOARD
NEXT TO PRIMARY LEAVING EXAMINATIONS – 2022
THE VERIFIED UNEB BLUE PRINT ITEM (FOUR)

INTEGRATED SCIENCE

Time allowed: 2 Hours 15 Minutes

BASED ON
 THE
 PRIMARY SCHOOL
 ABRIDGED CURRICULUM
 FOR UGANDA

Index no:

Random No					Personal No				

Candidate's name:

Candidate's signature:

School:

District :

Read the following instructions carefully

1. This paper is made up of two sections: **A** and **B**.
2. Section **A** has **40** questions (**40 marks**).
3. Section **B** has **16** questions (**60 marks**).
4. Answer ALL questions in both sections **A** and **B**.
5. All answers **MUST** be written in the space provided
 In blue or black ball point pens or ink. All diagrams
 Should be in pencil.
6. Unnecessary crossing of answers will lead to loss of
 Marks.
7. Poor hand writing which cannot be easily read,
 May lead to loss of marks.

FOR EXAMINERS' USE ONLY		
Qn. No	MARKS	SIGN
1 – 10		
11– 20		
21 – 30		
31– 40		
44 – 46		
47 – 48		
49 - 51		
52 - 53		
54 - 55		
TOTAL		

The Real Private Teachers' Voice Examinations Board 2022.

Tel: 0782-927840/0704-816448/0741-126776

REAL PRIMARY LEAVING EXAMINATIONS 2022

Rely on us for weekly, monthly, Beginning of term, midterm and End of term tests. Pre-mocks, Mocks and Pre-PLE Examinations.

OUR PROMISE We are here to ease P.L.E for you. We are ready to **SERVE** you till the last minute.

We are Approachable, Reliable and Affordable



SECTION A (40MKS)

1. Name the type of soil suitable for making ceramics.

2. Mention the longest bone in the body.

3. Which fungal disease is associated with wearing wet socks?

The diagram below is of a common vector. Use it to answer questions 4 and 5.



4. Name the part labelled **P** on the above vector.

5. Which body system is affected by the germ spread by the above vector?

6. Give a reason why the filament of an electric bulb is coiled.

7. Name any one insect that pollinates flowers at night.

8. What state of matter is water at **32° F**?

9. Name the part of the brain whose function is similar to the semicircular canals of the human ear?

10. Give one reason why the government collects information on people's housing.

11. Apart from having segmented bodies and jointed legs, state one other characteristic common to all arthropods.

12. Give one way leguminous crops improve on fertility.

13. Mention one kidney disease that affects people between **45 – 60** years.

14. What role is played water in the process of making compost manure?

15. How are the valves in veins similar to the kink of a clinical thermometer in function?



Study the diagram of a candle below and use it to answer questions that follow.



16. Why did the above candle continue burning?
.....
17. What type of change is shown by substance **A**?
.....
18. Give one reason why farmers practice crossbreeding.
.....
19. What process makes due disappear on plant leaves?
.....
20. Identify a method of harvesting trees where a stem cut leaves a stump behind.
.....
21. State the immediate result of fertilization.
.....

Below is a list of organisms. Use it to answer question 22.

lion maize bacteria man

22. Which of the above organisms is a primary consumer?
.....
23. Name one cattle disease with the following signs; shivering, blood stained dung, blood oozing from the mouth, anus and nose.
.....
24. State the principle on which a plane mirror works.
.....
25. How does the skin reduce the loss of excessive heat from the body?
.....
26. Name the part of the thermos flask that prevents heat loss or gain by conduction.
.....
27. In which way is the retina of an eye similar to the film of a camera?
.....
28. Give one reason why medical workers discourage patients from taking under dose.
.....
29. Mention any one item that one can use to maintain cleanliness during menstruation period.
.....
30. Why is rainfall measured in millimeters?
.....
31. Give one way the use of a magnet can be similar to that of a shadow.
.....



32. What energy takes place in the dry cells of a torch when the circuit is complete?

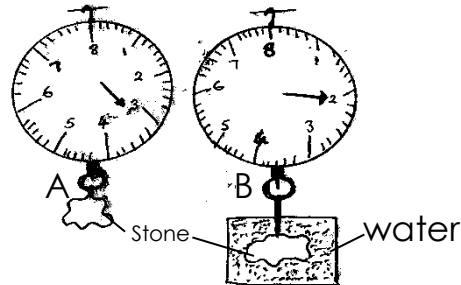
33. What is weathering?

34. To which class of lever does a single fixed pulley belong?

35. Give one way a primary school going boy can use to avoid smoking.

36. Give one cause of antisocial behaviour in the society.

An experiment below was done by a P.5 class. Use it to answer question 37.



37. Why does the stone behave as shown in B when placed in water?

38. Give one way plants reduce transpiration rate during the dry season.

39. How is a smelly jelly that surrounds eggs of amphibians important?

40. Give one example of an alloy.

SECTION B (60 Marks)

41. a). Give two causes of sickness at home.

(i)

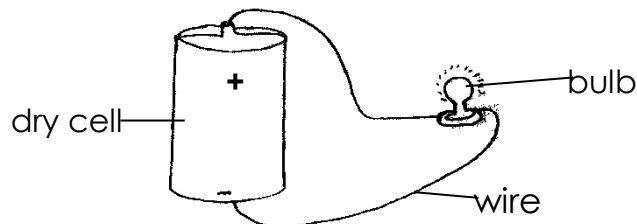
(ii)

(b). Suggest any two measures parents can take to control sickness in their children at home.

(i)

(ii)

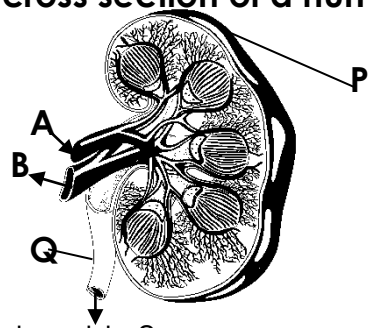
42. **The diagram below shows a dry cell and a bulb on it when a wire is connected as shown**



- a). What form of energy has been converted to light energy?
.....
- b). What form of energy is produced by the dry cell above?
.....
- c). Give one advantage of using a dry cell.
.....
- d). Use the arrows to indicate the flow of electricity on the dry cell above.

43. a). Why is piggyery an important project to a farmer in Uganda today?
.....
- b). Mention any two factors farmers consider when selecting piglets to rear.
 - (i).....
 - (ii).....
 - c). How can pigs be useful to crop production?
.....

The diagram below is a cross section of a human kidney. Study it carefully to answer the questions.



- 44.a). What does part **Q** lead to?
.....
- b). What important process takes place in **P**?
.....
- (c). Give one water bone disease of the organ above.
.....
- (d). State the difference between blood vessel **A** and **B**
.....

- 45.(a). What are renewable resources?
.....
- (b). Give any one example of non-renewable resources in the environment.
.....
- (c). What type of electricity is produced from burning crude oil?
.....
- (d). Why is soil regarded as a renewable resource?
.....



46. The diagram below shows a boy using a metallic bar to raise a sack of beans. Use it to answer questions that follow.



- a). Which class of simple machine is the boy using?
 (i).....
 (ii).....
- b). What can he do to lift the sack more easily?

- (c). Name the force that shows movement in moving parts of a machine.

- d). How is the force in (c) useful in our daily life?

47. a). Mention two ways of making magnets.
 (i).....(ii).....
- b.) Write down any two ways of demagnetization.
 (i).....(ii).....

48. In the table below list Q shows the different methods of separating mixtures. List R shows sample mixtures that can be separated but in their wrong order.

List Q	List R
(a). filtration	Pure alcohol from fermented alcohol.
(b). decantation	Separated tea from tea leaves.
(c). distillation	Obtaining salt crystals from water.
(b). evaporation	Obtaining pure water from muddy water.

Select from the table the correct sample of mixture for the appropriate method below and write it in the space provided.

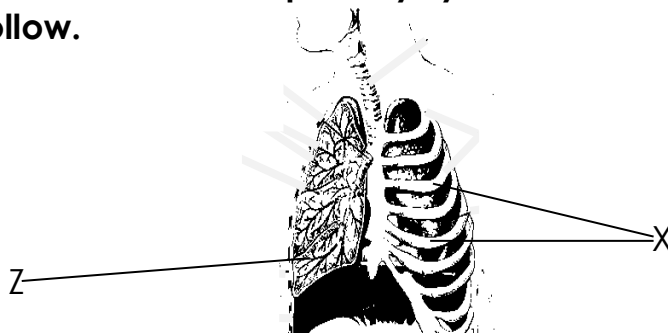
- (a). filtration
- (b). decantation
- (c). distillation
- (d). evaporation

49. a). What does the term agro forestry mean?

- b). Apart from agro forestry, give any two other human activities that can help to conserve our environment.
 (i).....(ii).....
- (c). Mention any one way of caring for trees in agro forestry.



50. The diagram below shows the respiratory system of a man. Use it to answer questions that follow.



- a). Name the body organ marked **Z**.
.....
- b). Give one reason why organ **Z** contracts during exhalation.
.....
- c). State the importance of structure marked **X** to organ **Z**.
.....
- d). Mention any one way tobacco smoking is dangerous to organ marked **Z**.
.....

51. The following are lists of organisms **K** and **L** that belong to different groups. Use them to answer the questions that follow.

List K
liverworts
moulds

List L
mosses
mushroom

- a). To which group of plants do organisms in **K** belong?
.....
- b). State one similarity between organisms in list **K** with those in list **L**.
.....
- c). How are organisms in list **K** different from those in list **L**?
.....
- d). Mention one other organism that can be grouped together with organisms in list **L**.
.....

- 52. (a). Give the difference between pitch and volume of sound.
.....
- b). Give one natural source of sound.
.....
- c). State two ways how echoes are important in our daily life.

- (i).....
- (ii).....

- 53. a). Give two uses of soil to man.
- (i).....
- (ii).....



(b) State any one way soil can be degraded.

.....
(c). Give one way soil can be improved for crop growing.

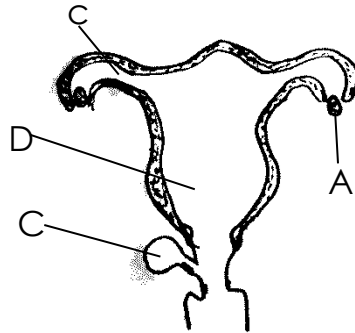
.....
54. a). What general name is given to the bones of the spines?

.....
b). State two regions of the human skeleton.

(i)..... (ii).....

c). Apart from movement, give any other function of a skeleton to a human being.

.....
55. **Below is a human female reproductive system. Study it carefully to answer questions that follow.**



a). Name the part labelled **C** and **D**.

(i) **C**..... (ii) **D**.....

b). State the function of the part labelled **A**.

.....
c). How can one care for the system above?

.....

**WE ARE THE REAL
AND SO YOU ARE**

