



# KAMPALA PARENTS' SCHOOL 2004

## PRIMARY SIX REVISION WORK INTEGRATED SCIENCE – SET 17

Name: \_\_\_\_\_ Stream: \_\_\_\_\_

1. How many teeth make up the milk set of teeth in humans?  
\_\_\_\_\_
2. Why does a butterfly die when its abdomen is covered with maize flour?  
\_\_\_\_\_
3. Why do wind pollinated flowers produce a lot of pollen grains?  
\_\_\_\_\_
4. Why do farmers dock the female sheep?  
\_\_\_\_\_
5. Why do doctors dip a clinical thermometer in alcohol before using it on another patient?  
\_\_\_\_\_

**The diagram below shows a method of seed dispersal.**



6. Identify the method of seed dispersal shown above.  
\_\_\_\_\_
7. Why is cholera regarded as a communicable disease?  
\_\_\_\_\_
8. How is a micropyle important on a bean seed?  
\_\_\_\_\_
9. a) What type of immunity does a child get after recovering from an illness?  
\_\_\_\_\_
- b) Apart from measles, mention one other viral immunisable disease among infants.  
\_\_\_\_\_

c) write down the importance of a child health card to:

i) The parent: \_\_\_\_\_

ii) The health worker: \_\_\_\_\_

10.a) How is transpiration important to plants?

\_\_\_\_\_

a) Write one factor that affects the rate of transpiration.

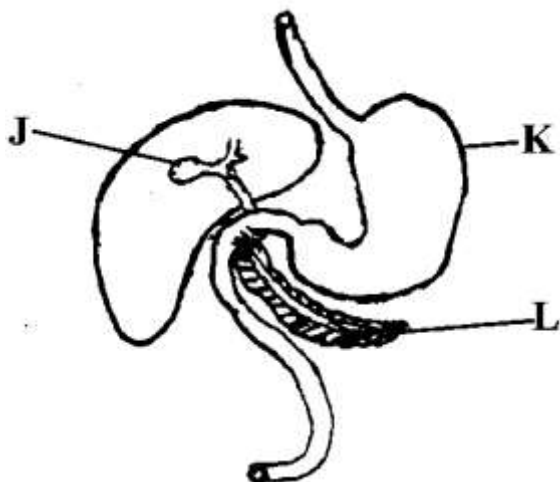
\_\_\_\_\_

b) Give two ways in which plants control the rate of transpiration.

i) \_\_\_\_\_

ii) \_\_\_\_\_

11. **Study the diagram below showing part of the digestive system of man. Use it to answer questions that follow.**



a) Name parts labeled **J** and **L**.

i) **J** \_\_\_\_\_

ii) **L** \_\_\_\_\_

b) Which juice is contained in part J?

\_\_\_\_\_

c) State the end product of protein digestion.

\_\_\_\_\_

\*\*\*\**End*\*\*\*\*



# KAMPALA PARENTS' SCHOOL 2004

## PRIMARY SIX REVISION WORK

### ENGLISH – SET 17

---

---

Name: \_\_\_\_\_ Stream: \_\_\_\_\_

**In questions 1 – 10, use the correct form of the words in brackets to complete the sentences.**

1. All the P.6 pupils enjoyed \_\_\_\_\_ by air. (travel)
2. I can use my big toe to draw a \_\_\_\_\_. (circular)
3. The man who was so \_\_\_\_\_ lifted a sack of charcoal alone. (energy)
4. The three \_\_\_\_\_ with whom we went to Dubai have been arrested. (Kenya)
5. Our colour was the \_\_\_\_\_ in the athletics competitions. (good)
6. A friend of \_\_\_\_\_ has bought a new TV set. (they)
7. The \_\_\_\_\_ of the first bus to Fort Portal is 8:00 am. (depart)
8. Your class is \_\_\_\_\_ to tour Western Uganda this term. (like)
9. Kikulwe is \_\_\_\_\_ loved by his parents. (dear)
10. I \_\_\_\_\_ my English holiday work by the time I left school for holidays. (do)

**Study the dialogue below and, in full sentences, complete it with the missing responses.**

Hannah : Congratulations on completing the term.

Matthew: \_\_\_\_\_

Hannah : Have you made any holiday plan?

Matthew: \_\_\_\_\_

Hannah : What I mean is that do have a programme for your holiday?

Matthew: \_\_\_\_\_

Hannah : That's good. Where have you planned to spend your holiday?

Matthew: \_\_\_\_\_

Hannah : How long will you stay at your uncle's place in Kamuli?

Matthew: \_\_\_\_\_

\_\_\_\_\_

Hannah : Why not more than one week?

Matthew:

---

---

Hannah : In which subject is the homework you want to come back and do?

Matthew:

---

---

Hannah : How many numbers are in each of the subjects?

Matthew:

---

---

Hannah : Can't you do fifty numbers every day?

Matthew:

---

---

Hannah : So you need only four days to complete your holiday work, don't you?

Matthew:

---

---

\*\*\*\**End*\*\*\*\*



# KAMPALA PARENTS' SCHOOL 2004

## PRIMARY SIX REVISION WORK

### SOCIAL STUDIES – SET 17

Name: \_\_\_\_\_ Stream: \_\_\_\_\_

1. How is smuggling of goods a disadvantage to a country's economy?  
\_\_\_\_\_
2. Which symbol of the EAC is similar to the Uganda flag?  
\_\_\_\_\_
3. What does the term pre-history mean? \_\_\_\_\_  
\_\_\_\_\_
4. Mention the three sub-groups of the Nilotes in East Africa.  
i) \_\_\_\_\_ ii) \_\_\_\_\_ iii) \_\_\_\_\_
5. State any two factors that led to the growth of the Buganda kingdom.  
i) \_\_\_\_\_  
ii) \_\_\_\_\_
6. How did the Arabs promote religion in East Africa?  
\_\_\_\_\_
7. Why was slave trade regarded as an evil trade?  
\_\_\_\_\_
8. Suggest any two ways testseflies can be controlled in an area.  
i) \_\_\_\_\_  
ii) \_\_\_\_\_
9. What are deciduous trees?  
\_\_\_\_\_
10. Name the vegetation zone that grows well in salty water of the coastal region.  
\_\_\_\_\_
11. How are game parks important to East African governments?  
\_\_\_\_\_
12. Who were the sultans?  
\_\_\_\_\_
13. i) Why is water used during Baptism?  
\_\_\_\_\_  
\_\_\_\_\_  
ii) How was Jesus Christi important to the life of Lazarus?  
\_\_\_\_\_  
\_\_\_\_\_
14. i) What is Islam?  
\_\_\_\_\_  
\_\_\_\_\_  
ii) Mention any one pillar of faith.  
\_\_\_\_\_  
\_\_\_\_\_



# KAMPALA PARENTS' SCHOOL 2004

## PRIMARY SIX REVISION WORK

### MATHEMATICS – SET 17

---

Name: \_\_\_\_\_ Stream: \_\_\_\_\_

1. What number has been expanded below:  
 $40,000 + 700 + 2$ .

2. **Simplify:**  $+5 - +2 =$

3. Solve:  $\frac{2}{3}m = 4$ .

4. The mean age of 4 girls is 9 years. Find their total age.

5. Construct an angle of  $60^\circ$ .

6. Express  $\frac{12}{5}$  as a mixed fraction.

7. **Work out:**  $0.15 \div 0.3$

8. Write 54 in Roman numerals.

9. Change 650 centimetres into metres.

10. Five pupils scored the following marks in a Mathematics test: 55, 72, 61, 93 and 60. Find the median mark.

11.a) Change  $1011_{\text{two}}$  to base ten.

b) **Add:**  $2 + 3 = \underline{\hspace{2cm}}$  (finite 4)

12. The mean of the scores 8, 9, 6, 4 and x is 6.

a) Find the value of x.

b) What is the median score?

13. A school has a population of 1080 pupils.  
 $\frac{3}{5}$  of them are girls and the rest are boys.

a) How many girls are there?

b) How many boys are there?

c) How many more girls than boys are there?

14. John was given a bundle of ten thousand shilling notes numbered consecutively from AX000500 to AX000600.

a) How many notes were in the bundle?

b) How much money was in the bundle?

*End*